

SOLARIS™

Windows-based controller for Semitool Tools



DESCRIPTION:

ClassOne's all-new Solaris Controller system has been developed as a replacement for the antiquated Semitool 302 controller. The PLC Controller features intuitive state of the art electronics with fully configurable software for real time control, data-logging, and communications, driven by an intuitive graphical user interface, designed and developed by former Semitool veterans at ClassOne Technology, a wholly owned subsidiary of ClassOne Equipment.

BENEFITS AND ADVANTAGES:

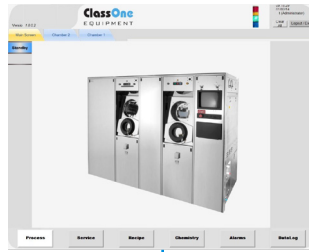
- Significantly extends the life of existing 302-based systems (SAT, SST), reducing CAPEX
- Brand new Quad-Core CPU with Windows®, replaces the old, obsolete 486-based processor and proprietary software
- Flexible reconfiguration of the system, such as adding tanks and changing pumps
- Dual hard drives and RAID configuration for hot-swapping and backup for increased uptime
- Ethernet network connectivity allows remote data logging, real time chemical consumption monitoring, predictive maintenance functions, email notifications and reporting
- Reversible cassette rotation for enhanced process capability
- Integration of off the shelf electronics with fully configurable software

Hardware	Solaris	302
Windows-7 Based System	●	
EtherCat Backbone/Expandability	●	
LCD Touch Screens	●	
Fault-Tolerant RAID2 Data Storage	●	
USB and Ethernet Ports	●	
BitShift Cards/Card Cage Replaced	●	
New Motor Controller (1 rpm control)	●	
Supports System Reconfiguration (e.g. Tanks, Instrumentation)	●	

Software	Solaris	302
Maintains all current capabilities	●	●
Chemical Consumption Monitor & Alarms	●	
E-Mail Alerts	●	
Improved Event Logging	●	
25x Faster Data Polling	●	
Multiple, Customizable Logins	●	
Real-Time Reliability Reporting	●	
Remote Login	●	
Field Retrofittable	●	

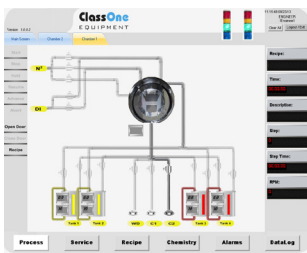
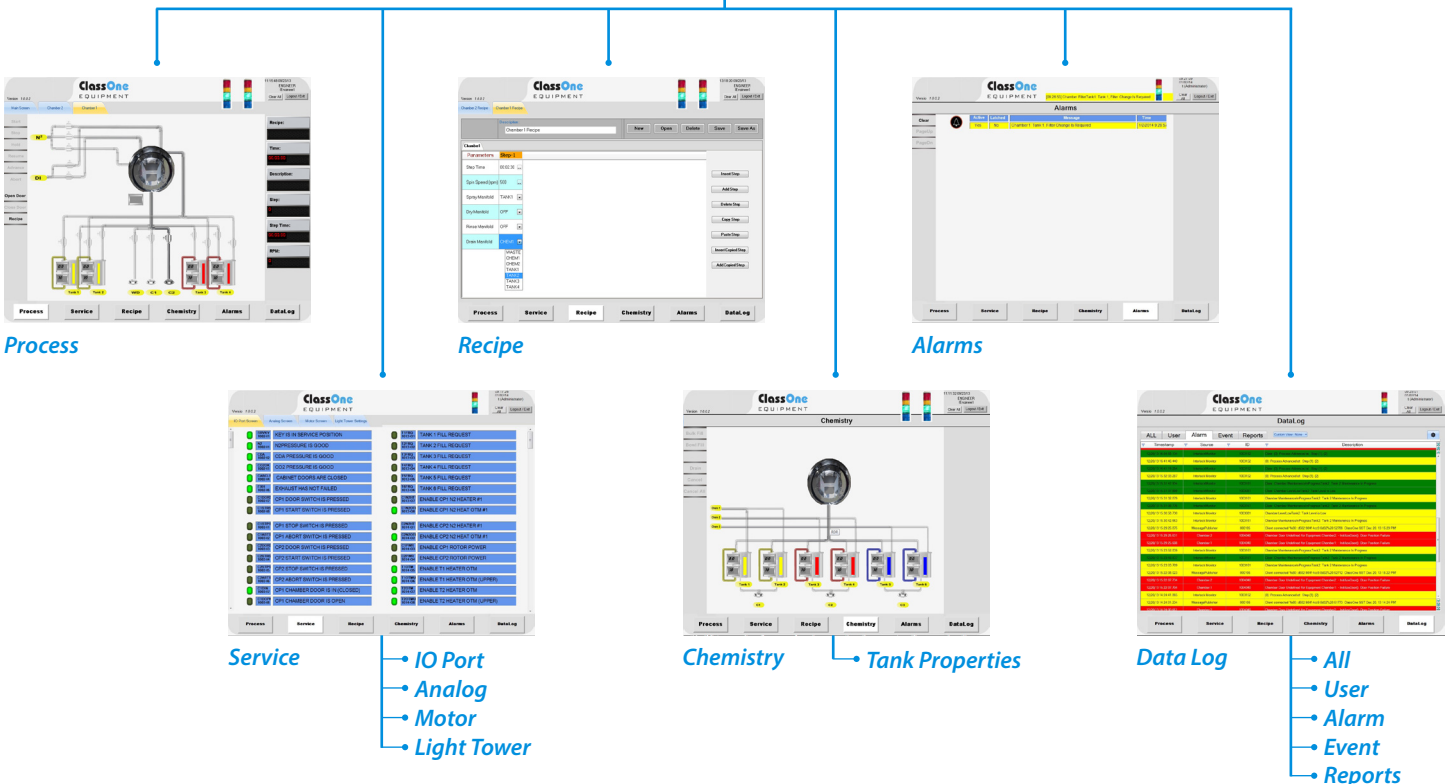


Specifications & Features

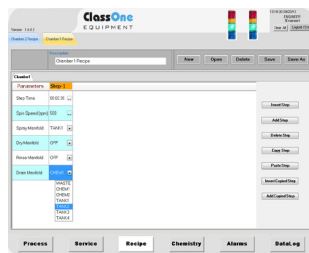


Main Screen

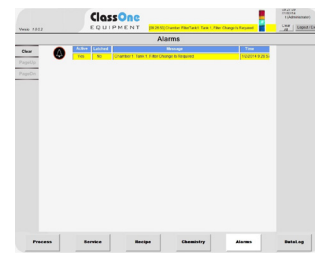
- Process: Chamber 1
- Process: Chamber 2
- Chemistry



Process



Recipe

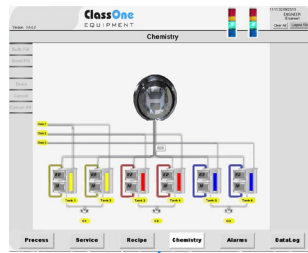


Alarms



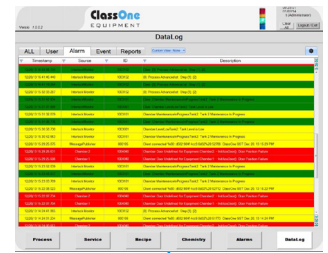
Service

- IO Port
- Analog
- Motor
- Light Tower



Chemistry

- Tank Properties



Data Log

- All
- User
- Alarm
- Event
- Reports

Contact a ClassOne representative for more information

CORPORATE HEADQUARTERS

ClassOne Equipment, Inc.
5302 Snapfinger Woods Drive
Atlanta, Georgia 30035

United States

tel: +1 770 808 8708

fax: +1 770 808 8308

info@ClassOneEquipment.com

www.ClassOneEquipment.com

EUROPE

ClassOne Technology Europe Ltd
Bill Tutte
22 Westgate
Great Walsingham, Norfolk NR22 6DY

United Kingdom

tel: +44.7887.993.530

BTutte@ClassOneEquipment.com

www.ClassOneEquipment.com

ASIA

SPM International Ltd
Jolin Yin
Room 805, Building E, 82 Cao Bao Road,
Shanghai 200235, P.R.

China

tel: +86 21 64326252

fax: +86 21 64326253

yingqi@spm-intl.com

www.ClassOneEquipment.com